



MONTHLY MEMBERSHIP PROGRESS REPORT

District 2 S5

Results as of: 12/31/2017

GMT: JOE AL PICONE

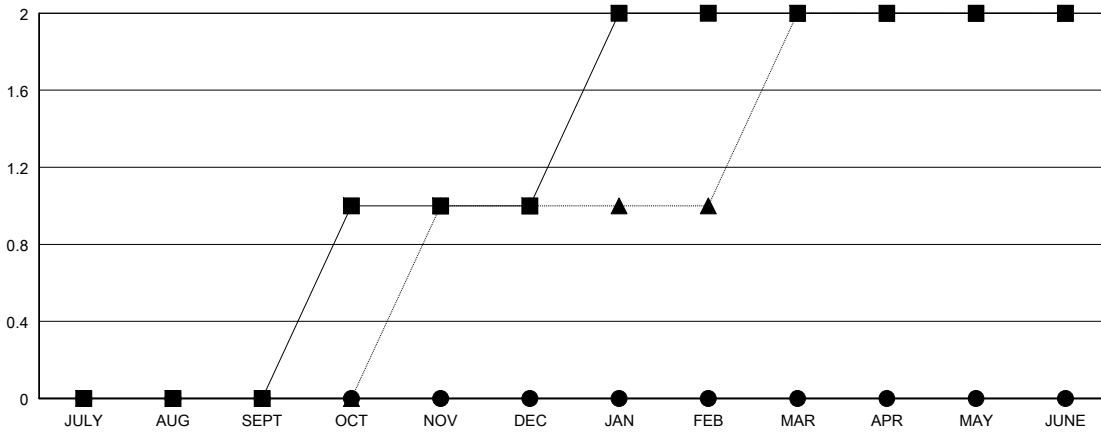
LOCATION TEXAS

GMT CA

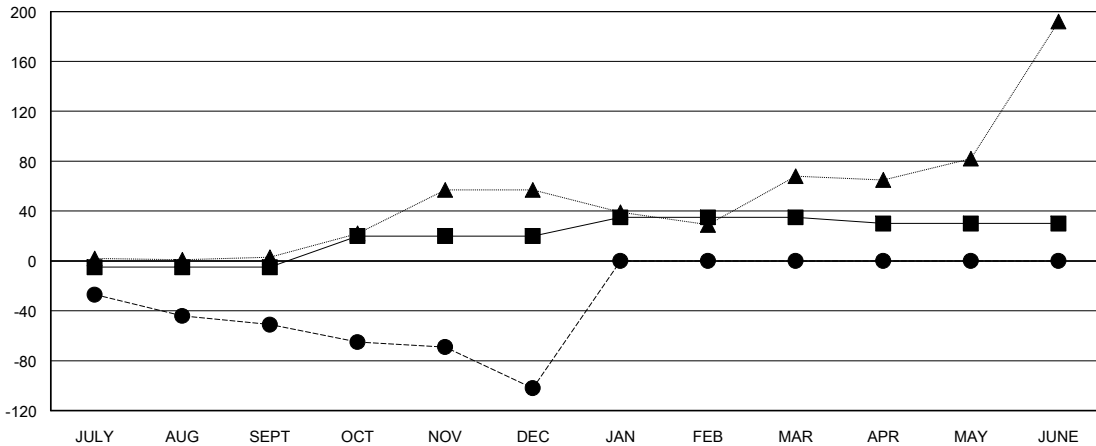
Clubs			
RESULTS FOR 2017-2018			
QUARTER	NEW CLUB GOAL	NEW CLUBS	DROPPED CLUBS
JULY/AUG/SEPT	0	0	0
OCT/NOV/DEC	1	0	1
JAN/FEB/MAR	1	0	0
APR/MAY/JUNE	0	0	0

Members			
RESULTS FOR 2017-2018			
QUARTER	MEMBER GROWTH NET GOAL	MEMBER GROWTH ACTUAL	DROPPED MEMBERS ACTUAL (including transfers)
JULY/AUG/SEPT	-5	43	90
OCT/NOV/DEC	25	65	112
JAN/FEB/MAR	15	0	0
APR/MAY/JUNE	-5	0	0

GOALS AND ACTUAL NEW CLUBS CUMULATIVE



GOALS AND ACTUAL MEMBERS CUMULATIVE



DROPPED CLUBS: 1

32 CLUBS OF 61 ADDED 1 OR MORE NEW MEMBERS

GENDER DISTRIBUTION	
MALE	1,503 (63.23%)
FEMALE	874 (36.77%)
Women Percentage Fiscal Year Goal: 20%	

DROPPED MEMBERS	
DECEASED	9
CLUB CANCELLED	15
OTHER	178
TOTAL	202

[CLICK HERE FOR CUMULATIVE MEMBERSHIP DATA](#)

TOTAL FAMILY UNIT MEMBERS	386
FAMILY MEMBERS PAYING HALF DUES	195